

MARATHON PRODUCTS

EDL-Net™

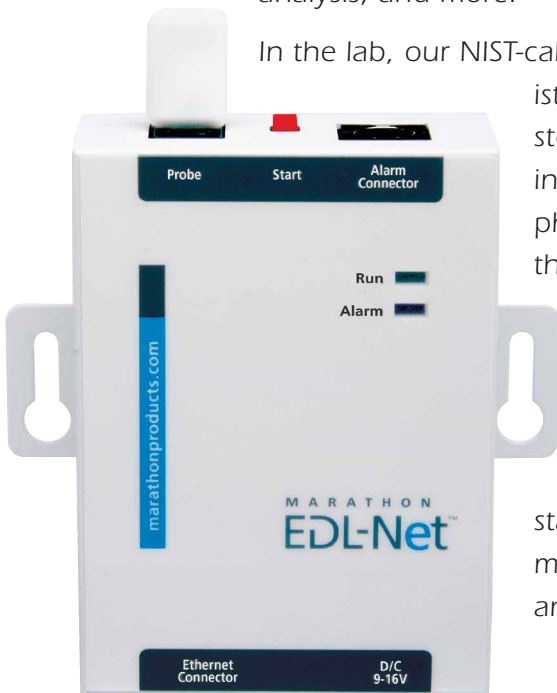
Remote Temperature Facilities Management for Hospitals, Laboratories and Research Organizations using Ethernet Connectivity.

Use our Ethernet enabled EDL-Net data loggers to enjoy real-time temperature data collection and monitoring at anytime, from anywhere in the world over a local network or via an internet connection. Leverage your existing LAN with the built-in RJ-45 jack for CAT-5 LAN, or an Ethernet-to-WiFi bridge for WiFi connectivity to avoid expensive installation costs for managing temperature data. Marathon's Ethernet enabled loggers will allow you to monitor multiple floors, buildings, rooms and locations simultaneously.

Our advanced software can be programmed by the user to detect high and low temperature excursions, or power outages, and trigger audible and visible alarms as well as send alert notifications via cell phone and/or e-mail for facilities management control.

Marathon's 21 CFR: Part 11 compliant software, with secure supervisory controls, will allow database creations for products, part numbers, dates, locations, identification numbers, statistical analysis, and more.

In the lab, our NIST-calibrated and traceable thermistor probes have been tested sterile and can be used in incubators. In hospitals, clinics, pharmacies and blood banks, the EDL-Net is perfect for quality assurance and quality control, monitoring low temperature freezers, blood storage, vaccines and biologics via state-of-the-art high-performance temperature sensors and data logging.



BENEFITS:

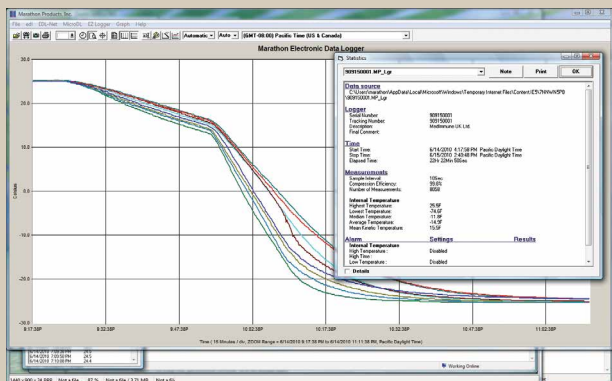
- Alarm notifications via email, phone, pager or SMS
- Multiple Alarm options: local and remote
- Interchangeable sensors: -80° C to 72° C
- Precision temperature data capture
- Powerful software with real time display
- Audit Trails for Regulatory Control
- 8K to 64K EEPROM memory options
- Power outage detection capabilities

MARATHON
PRODUCTS, INC.

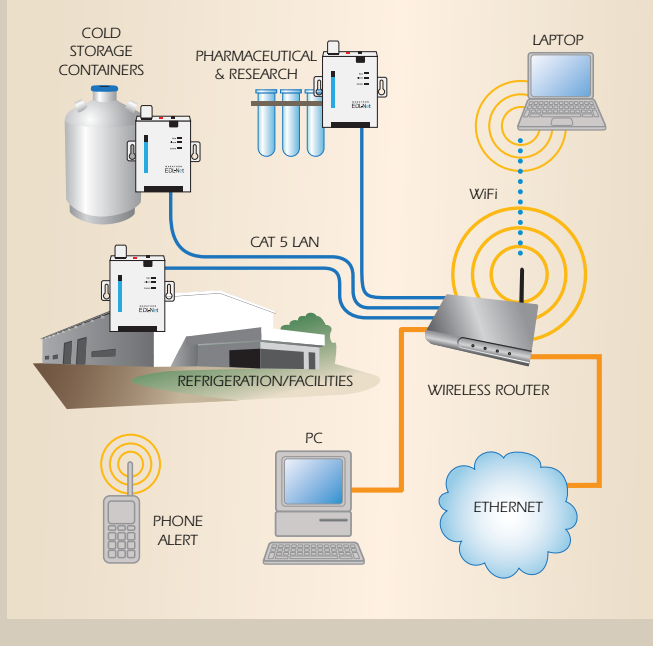


Don't ship without us!®

MDAS-Pro Software Highlights: Easy-to-use software provides clear graphs. Report Summary & Statistics File Manager, Note Attachment, Zoom, Elapsed Time or Date/Time View, Recorded View, Celsius, Fahrenheit or Kelvin, Display 3D View option. Data can be exported to other Windows programs such as spreadsheet, word-processing or database. Language support for Chinese, English, French, German, Japanese, and Portuguese. Available for WindowsXP, Vista, 7, 8 and 10. An Enterprise Software version and 21CFR Part 11 Compliant Software are also available.



For FDA, GxP, JCAHO, CAP, HFAP, CARF, CHAP, ACHC, URAC, HQAA, AABB and Regulatory Compliance



EDL-Net Specifications

- EEPROM Memory: 8k to 64k (approx. 8,000 to 64,000 measurements)
- Temperature Range:
 - SKU #8083: -40° C to +72° C / -40° F to +160° F
 - SKU #8180: -40° C to +72° C / -40° F to +160° F
 - SKU #8084: -80° C to +30° C / -112° F to +70° F
- Temperature Accuracy: ±0.5° C at center; ±1.0° C at extremes
±0.9° F at center; ±1.8° F at extremes
- Humidity Range: 0% to 100% (SKU#8180 only)
- Humidity Accuracy: ±3% RH (SKU#8180 only)
- Measurement Intervals: 2 second increments to months
- Number of measurements: 8,000 to 64,000 EEPROM memory options
- Start: Remote start via software or push button
- Alarm programming: High and low alarm limits set by temperature and time
- Alarm Modes: Continuous or cumulative with LED Indicators:
- Alarm Notifications: Alert notification to email, phone, pager and SMS
- Power Source: Requires 110 AC power. User replaceable internal 3V lithium battery for data logging function, IATA – FAA Compliant. Battery backup—Failsafe prevents data loss.
- Accessories:
 - Optional flat cable probes
 - External audible alarm boxes
 - Phone Dialer
- Physical properties:
 - Width: 3.11 inch/79.0 mm
 - Height: 3.60 inch/91.4 mm
 - Depth: 1.11 inch/28.3 mm



Please call 1-510-562-6450
for more information or to place an order.

www.marathonproducts.com

14500 Doolittle Drive, San Leandro, CA 94577 ▪ sales@marathonproducts.com
Specifications subject to change without prior notice.