

MARATHON PRODUCTS

The EDL-4S™

For All Your Laboratory, Cold Room and Environmental Monitoring.

Now obtain Temperature, RH, CO₂ and Vibration profiles in a compact low-cost 4-channel LCD data logger! Use either as a stand-alone device, or as a Wireless Data logger when connected to our separate WiFi Reader Station. The Reader Station may be battery powered or AC powered, your choice. This device is perfect for mapping your warehouse, refrigerators or monitoring industrial machinery during shipment or stationary applications.

- Temperature Sensor: RTD -200° C to +380° C, Accuracy $\pm 0.3^{\circ}$ C
- Relative Humidity Sensor: Capacitive humidity readings 0% to 100% RH.
- CO₂ Sensor: Infrared 0 to 30,000 PPM accuracy ± 30 PPM ± 5 %
- Vibration sensor: 3-D Accelerometer with a sampling rate of 1 to 400 Hz.

WiFi and 4G Capability

The EDL-4S can be remotely monitored via a WiFi when attached to the separate WiFi Cellular Reader Station. The device

also connects directly to the computer via a USB port for settings.

Statistics and mathematical functions:

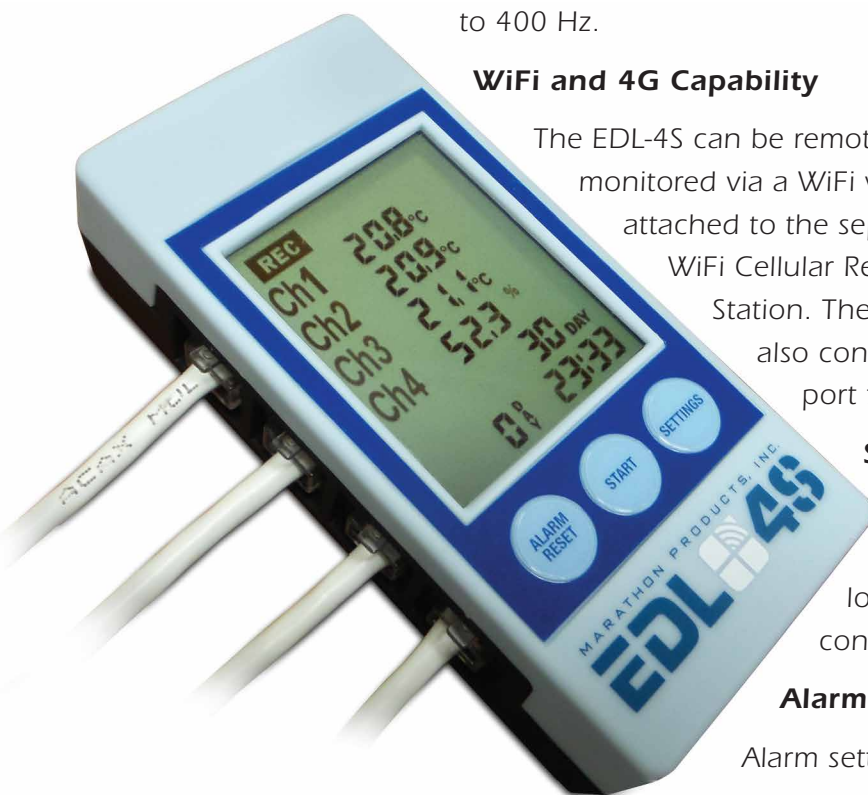
In addition to temperature and humidity, this compact 4 channel LCD data logger calculates min/max. over alarm conditions and much more.

Alarms and battery backup

Alarm settings can be set up quickly in the

HIGHLIGHTS:

- Temperature sensors: RTD -200 C to +380 C
- Relative Humidity Sensor: 0% to 100 % RH
- CO₂ Sensor: Infrared 0 to 30,000 PPM
- Vibration sensors: Mems sampling rate 1 to 400 Hz
- 32 K memory storage per channel for single data sensor probe on 4 channels.
- Precision data capture
- Alert notifications by email or SMS
- Standard 2 meter probes
- Sensor recalibration firmware



MARATHON
PRODUCTS, INC.



Don't ship without us!®

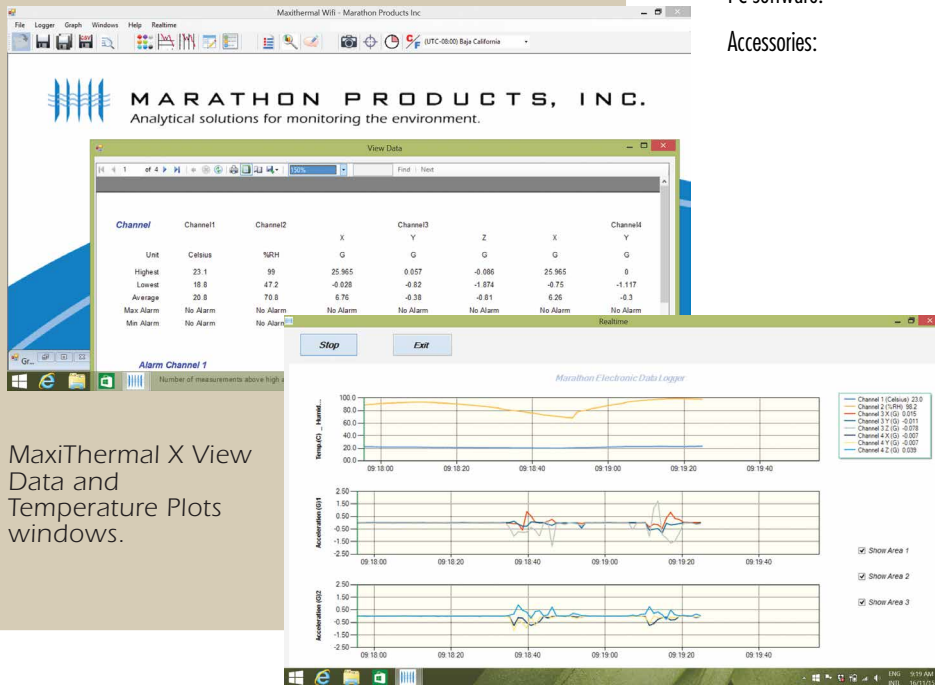
MaxiThermal WiFi software based on temperature and RH. Likewise, alarm settings can be set up to trigger email notifications. This device contains one AA lithium battery for ample power. The WiFi reader is powered by four AA batteries or with an AC/DC adapter.

Large, easy-to-read display

The EDL-4S is the ideal instrument for documenting, controlling, and managing critical environmental conditions graphically, statistically and in real time. View high/low data and all alarm conditions in real time on the LCD display.

MaxiThermal X Software Highlights: Easy-to-use software provides clear graphs. Report Summary & Statistics File Manager, Note Attachment, Zoom, Elapsed Time or Date/Time View, Recorded View, Celsius or Fahrenheit. Data can be exported to other Windows programs such as spreadsheets, word-processing or databases. Available for Windows 7, 8 and 10.

An Enterprise Software version and 21CFR Part 11 Compliant Software will be available.



MaxiThermal X View Data and Temperature Plots windows.

EDL-4S Specifications SKU #7050

- Memory: 128k data memory for 4 sensors, Automatic data memory size adjustment
- 4 Digital sensor options: RTD, Humidity, CO₂, Vibration
 - Temperature Range: -200°C to +380°C / -328°F to +716°F
 - Temperature Accuracy: ±0.3°C at room, 1.0°C at extremes.
 - Temperature Resolution: 0.1°C / .18°F
 - Humidity: 0% to 100% RH
 - CO₂ Sensor: Infrared 0 to 30,000 PPM. Accuracy ± 30 PPM ±5 %
 - Vibration: Up to 16G and 400 hertz sampling
- Recording Rate (sec.): Set by user
- Alarm Programming: High and low alarm limits set by temperature, humidity, and time
- Alarm Modes: Time Over Alarm (TOA) displays for each channel
- Alarm Notifications: Alert notification to e-mail, phone, pager and SMS
- Interface: RJ11 interface for 4 sensors
- Communication: USB 2.0 with mini USB-B connector
Optional WiFi via Reader Station
- Power Source: 1- LiSoCl2 3.6V 1.2 Ah for logger
4- LiSoCl2 3.6V 2.4Ah or
1120V/220V AC adaptor for WiFi Reader
- PC software: MaxiThermal X
- Accessories: Optional cable probes up to 30 meters for RTD

Physical Properties

- Operating range: 0°C to 50°C,
- Storage range: -20°C to +85°C
- Display: FSTN segment LCD
- Viewing area: 60 x 40 mm
- Width: 5.0 cm / 1.96 in.
- Height: 10.5 cm / 4.13 in.
- Depth: 2.5 cm / .98 in.
- Weight: 300 grams / 10.58 oz.

For information on the EDL-4S and MaxiThermal X software please contact Marathon Products.

Please call 1-510-562-6450
for more information or to place an order.

www.marathonproducts.com

14500 Doolittle Drive, San Leandro, CA 94577 ■ sales@marathonproducts.com

Specifications subject to change without notice.